

SPL31 SPIKE PULLER

STANLEY



SPL31 Series Specifications

Input Flow Range	4 - 10 gpm
	15 - 38 lpm
Length	32.25 in.
	82 cm
Width	16 in.
	40.6 cm
Weight	48.5 lbs
	22 kg
Optimum Flow	5 - 10 gpm
	20 - 38 lpm
Maximum Back Pressure	250 psi
	17 bar
Hydraulic Pressure	2,000 psi
	140 bar
Pulling Force	13,000 lbs.
	5,900 kg
Porting	8 SAE O-ring
Connector	HTMA Flush Faced Coupler

FEATURES:

- Best in class ergonomics for positioning and transport.
- Market leader in spike pulling force.
- Automatic pull cycle hydraulic circuit reduces tool kickback (SPL31A only).
- Advance sealing technology enhance life by 60%.



STANLEY

Stanley Hydraulic Tools | 3810 SE Naef Road | Milwaukie, Oregon 97267 | +01.503.659.5660 | 800.972.2647 | www.stanleyhydraulic.com

SPL31 SPIKE PULLER

STANLEY®

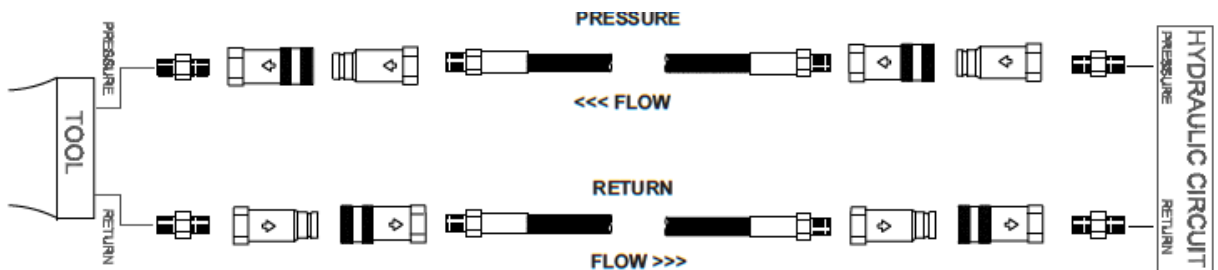
Ordering Information:

Order Number	Valve control
SPL31A	Auto Two Stage, Parker Couplers
SPL31AN	Auto Two Stage, Aeroquip Couplers
SPL31AS	Auto Two Stage, Parker Couplers, Safety Trigger

Accessory Information:

Order Number	Description
33256	Grip Jaw

Typical Hose Connections:



WARRANTY:

Stanley Hydraulic Tools and their associated parts are warranted against defects in materials and workmanship for a period of twelve months from the date of purchase. Stanley Hydraulic Tools reserves the right to repair or replace only those parts which prove to have been defective at the time of purchase. This warranty becomes void if maximum flow and pressure ratings are exceeded.

STANLEY

Stanley Hydraulic Tools | 3810 SE Naef Road | Milwaukie, Oregon 97267 | +01.503.659.5660 | 800.972.2647 | www.stanleyhydraulic.com